

GR-3 CAGED GUIDE RAIL SYSTEMS FOR SUBMERSIBLE SERIES 32, 32PT & 32XP CIU'S



GR-3 CAGED DUAL OR QUAD GUIDE RAIL SYSTEMS

The GR-3 caged dual or quad guide rails systems are designed for use with large HP GAS MASTRRR Series 32, 32PT & 32XP submersible chemical induction units. The Series 32XP mixers have motor weights up to 450 lbs. and require a heavy duty caged guide rail and motor slide bracket system for ease of installation and removal for maintenance. The dual or quad rail system allows the motor slide bracket to easily lower and raise without binding and provides support for the CIU as it stops in a horizontal or vertical position.

The guide rail assemblies are constructed from 316 stainless steel materials for long term duty in harsh water, wastewater, or CSO basin installations.

The GR-3 caged dual or quad guide rail systems are available with wall mount stand off support brackets for wide channel applications. Options include: Integral davit cranes, floor flange supports, and dual mixer systems for side by side CIU applications.

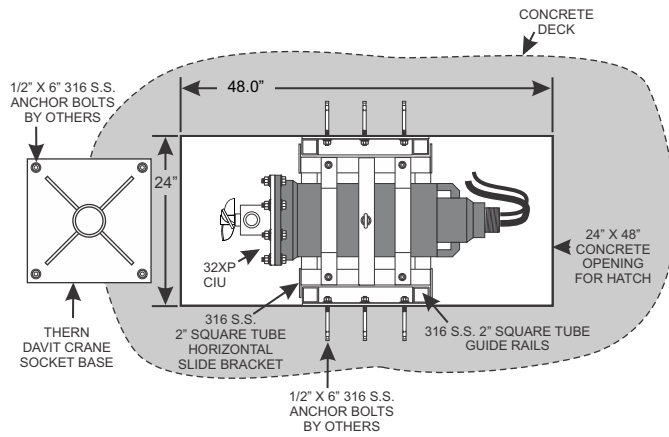
The GAS MASTRRR series GR-3 rail systems are proudly made in the U.S.A. and are backed by a 1 year limited warranty.



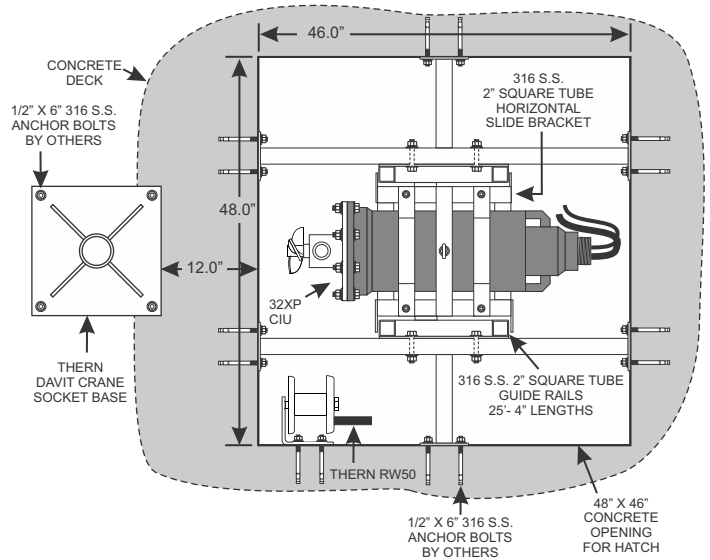
GR-3 CAGED GUIDE RAIL SYSTEMS FOR SUBMERSIBLE SERIES 32, 32PT & 32XP CIU'S

GR-3 CAGED GUIDE RAIL SYSTEMS - SAMPLE INSTALLATION DRAWINGS

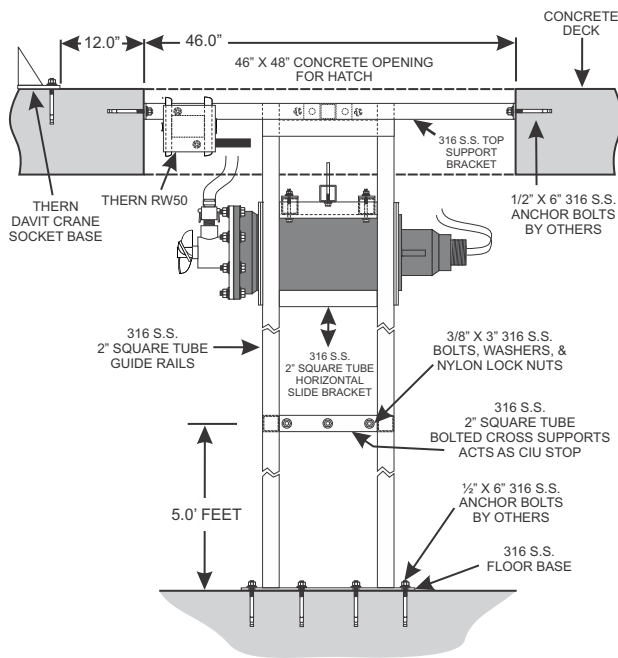
**SERIES 32XP TOP VIEW
24" X 48" CONCRETE OPENING**



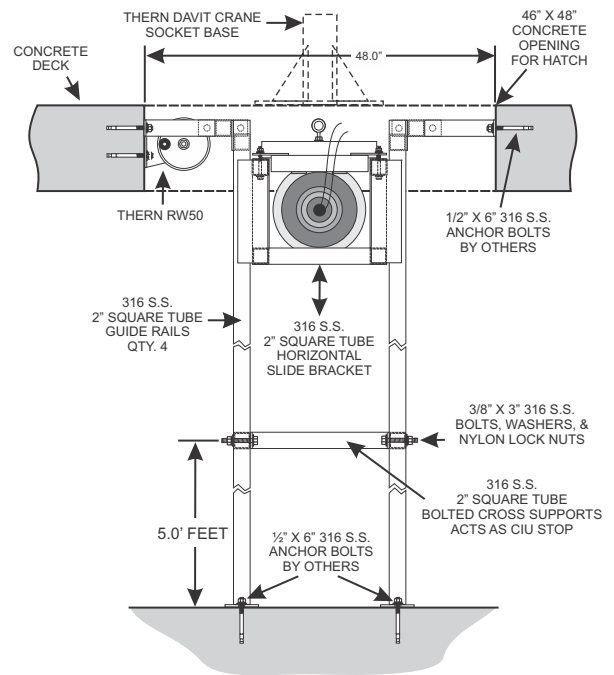
**SERIES 32XP TOP VIEW
48" X 46" CONCRETE OPENING**



**SERIES 32XP SIDE VIEW
48" X 46" CONCRETE OPENING**



**SERIES 32XP REAR VIEW
48" X 46" CONCRETE OPENING**



The GAS MASTRRR series GR-3 rail systems are proudly made in the U.S.A. and are backed by a 1 year limited warranty.



MAKING A WORLD OF DIFFERENCE IN CHEMICAL FEED TECHNOLOGY
1-800-299-6836 www.gasmastrrr.com mastrrrsales@gmail.com